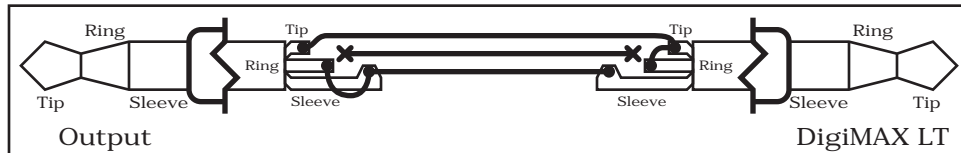


Insert Jacks As Analog Outputs Example 1

You may have noticed by now that the DigiMAX LT does not have a standard analog output. In the event that you want to have analog outputs as well as the Lightpipe output, you can use the inserts as analog outputs. To do this, all you need to do is modify a standard 1/4" TRS cable. The cable will need to be modified in order to work correctly without breaking the signal chain.



The end that plugs into the LT should have the Tip and Ring connected (signal carrier) and the Sleeve is ground. However, the ring contact should not be connected to the ring conductor. The other end of the cable should have the Ring and Sleeve bound (ground) and the Tip alone is the signal carrier. Remember, the Ring contact should not be attached to the Ring conductor. Please refer to the diagram above for visual clarification.