

Studio One – Mackie Control Support

Table of Contents

Introduction	1
1 Setup	1
1.1 Main Unit	1
1.2 Extender	1
1.3 Grouping Units	2
2 Function Overview	3
2.1 Mixer	3
2.1.1 Layout.....	3
2.1.2 Channel Controls.....	3
2.1.3 Bank channel-type filter using Global View buttons.....	3
3 Assignment Buttons	4
3.1 Automation	4
3.2 Control Link for Plug-ins	4
3.3 Transport	5
3.4 Function Keys	5
3.5 Utilities	5

Introduction

Studio One supports Mackie Control and compatible hardware control devices. This document is an overview of all remote-control functions currently supported with the Mackie Control protocol, including new functions introduced in Studio One 2.6.

If you haven't set up your Mackie Control-compatible devices, you can do so from the External Devices dialog (Preferences > External Devices). More information about using your controller can be found in the *Studio One Reference Manual* (Chapter 11: Control Link).

1 Setup

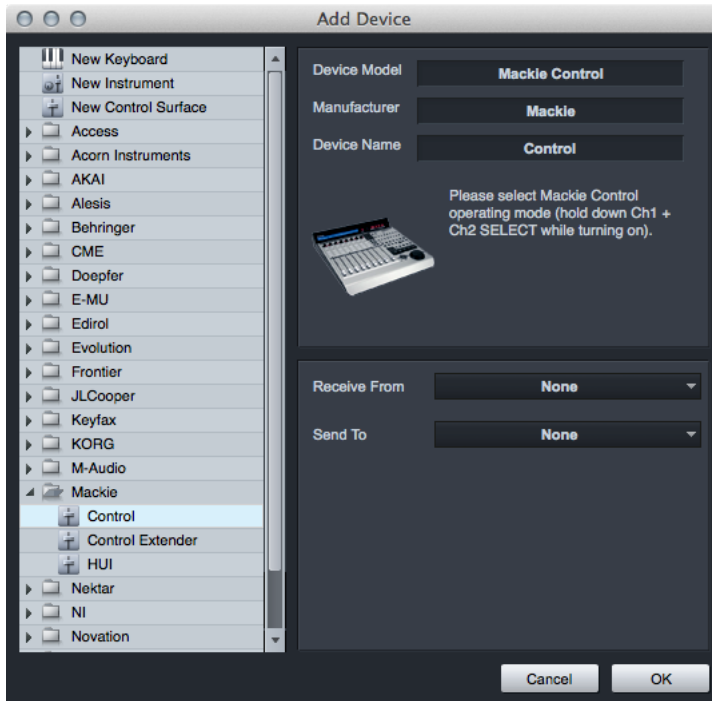
1.1 Main Unit

1. Select Mackie Control Universal mode. (Hold down both the Ch. 1 and Ch. 2 SELECT buttons while powering on the controller.) Do not use a Lexan overlay.
2. Add Mackie Control in the Add External Devices dialog.
3. Select the Send and Receive MIDI ports of your controller.

1.2 Extender

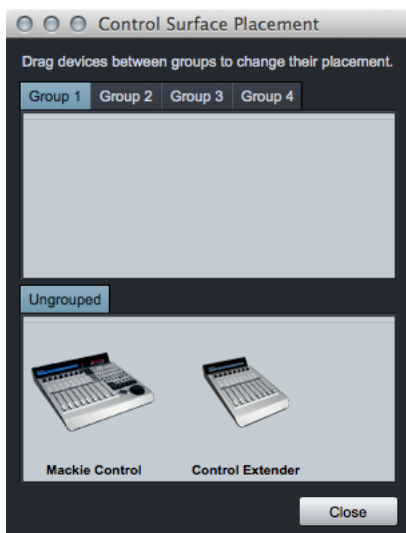
1. Select Mackie Control Universal mode. (Hold down both the Ch. 1 and Ch. 2 SELECT buttons while powering on the controller.)
2. Add Mackie Control Extender in the Add External Devices dialog.

3. Select the Send and Receive MIDI ports of your Extender.



1.3 Grouping Units

Use the Surface Placement option to create a Group and define the placement of each unit. Put two or more devices in the same group to create a connected mixer bank.



2 Function Overview

2.1 Mixer

2.1.1 Layout

The channel order follows the Remote Bank in the Studio One Mixer Bank pane. Here you can show and hide channels for the remote banks.

2.1.2 Channel Controls

Record	Arms the assigned audio track of the channel.
Solo	Solos the channel (with Momentary mode).
Mute	Mutes the channel (with Momentary mode).
Select	Sets the channel to the select state.
V-Pot	Changes the assigned parameter (see “Assignment Buttons section. Push to set the default value or toggle (On/Off) parameter.

Momentary mode for Solo and Mute:

- Press the button to quickly toggle the state.
- Press and hold the button to switch momentarily.

2.1.3 Bank channel-type filter using Global View buttons

Global View	Shows all Studio One channels (inputs, mixer and outputs).
MIDI Tracks	Unused
Inputs	Unused
Audio Tracks	Displays audio-track channels.
Audio Instrument	Displays Instrument output channels.
Aux	Displays FX channels.
Buses	Displays Buses.
Outputs	Displays Outputs.
User	Displays all remote bank channels.

3 Assignment Buttons

The assignment buttons are used to assign controls to the V-Pots. Flip button flips the channel V-Pots with the channel faders.

Pan (default)	Shows the track names in the LCD strip and assigns V-Pots to Channel Pan.
Sends	Assigns V-Pot to Sends.
	“SE” displays all Sends per selected channel.
	“S1-8” displays Send slot 1 to 8 on all channels.
	Press Send several times to step through the layers.
Track	Modify track parameters of the selected channel.
	Bypass all plug-ins.
	Monitoring on/off.
	Select channel input.
	Select channel output.
	Bypass sends 1-4.
EQ	Bypass for insert 1-8 of the selected channel.
Plug-in	Sets the V-Pots to Control Link mode.
Instrument	Unused

3.1 Automation

Toggle the automation mode for the selected channel.

3.2 Control Link for Plug-ins

In Control Link mode, you can customize the parameters shown in the plug-in mode for each plug-in. This can also be done by dragging parameters to the Mackie Control device editor from the top left of the toolbar or from the plug-in editor.



Each Mackie Control Universal and Mackie Control Extender is a separate Control Link device.

3.3 Transport

- Play, Rec, Stop, FF, and RW control the transport.
- With the Marker button enabled, FF and REW jump to the marker; the REC button inserts a marker at the cursor position.

3.4 Function Keys

Function keys are predefined but can be modified using the device editor.

F1	Show Inputs
F2	Show Track
F3	Console
F4	Open Channel
F5	Add Insert
F6	Add Send
F7	Show Channel Editor
F8	Toggle Floating Window

3.5 Utilities

Save	Press the Save button to save.
	Press Shift + Save button to open the Save As dialog.
Undo	Press to undo last edit.
	Press Shift + Undo to redo edit.
Cursor Keys	Cursor Keys navigate the arrangement (depending on current window focus).
	Horizontal and vertical zoom when zoom button is enabled.
	Can be used to navigate in the Insert/Send list and can be combined with Enter/Cancel to add plug-ins or sends.
Option + Bank Select	Selects previous and next device in an open plug-in editor.
Option + Channel Select	Selects previous and next preset in an open plug-in editor.
Wheel	Jumps to the nearest bar in the Arrangement (no scrub support).
SMPTE / Beats	Toggles the time display.
Name / Value	Toggles the value and track name in the display when the assignment is Send 1-8 or Control Link Mode.